

Cover photo by S. Holland | July 2021

Please note that the images show the version with the optional side Log Stores.

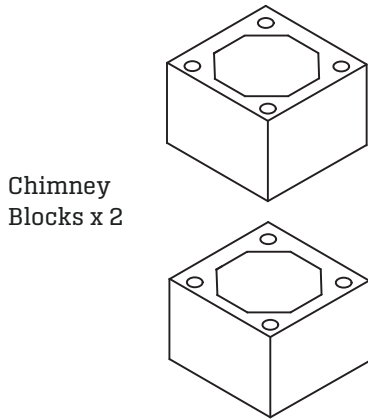
# Patio 500 Fireplace Installation Instructions

Build, rendering, firebricks and accessories

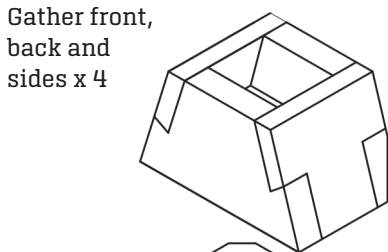
**LIT**  
designs



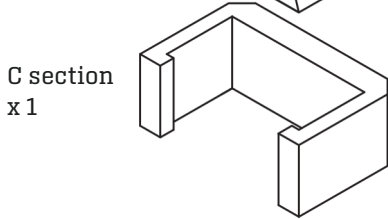
# Patio 500



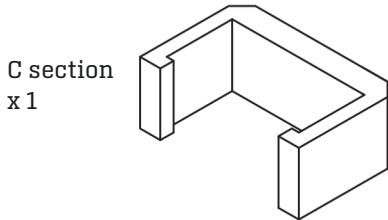
Chimney Blocks x 2



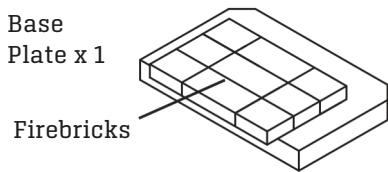
Gather front, back and sides x 4



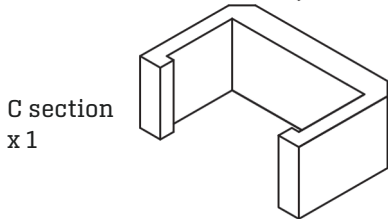
C section x 1



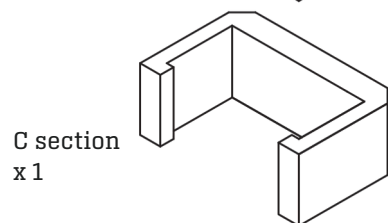
C section x 1



Base Plate x 1  
Firebricks



C section x 1

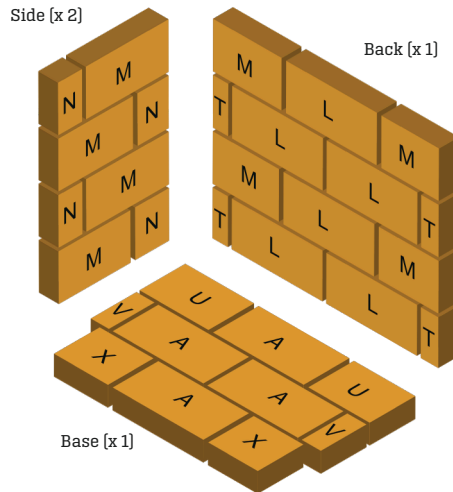


C section x 1

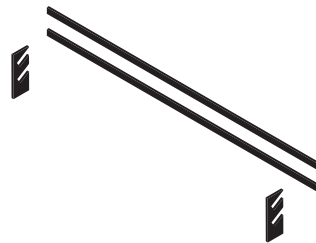
## The Patio 500 comes complete with the following components:

- 1 bag of Jointing Adhesive (for pumice components)
- 1 bag of Calderys Firebrick Mortar
- 1 bag of external render
- 1 log retainer kit (2 metal bars + 2 fixing brackets)
- 1x grill and fixing brackets

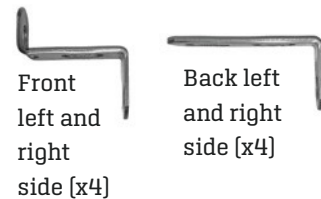
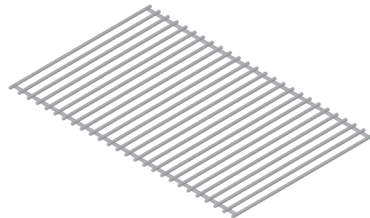
Fire brick diagram and parts [see page 8 for more details]



Log retainer kit [see page 10 for more details]



Grill and fixing brackets



## Preparation

The Patio 500 needs to be built onto a firm foundation. It should not be built directly onto decking. LIT DESIGNS recommends that a minimum 100mm reinforced concrete base is used to support the structure.

A distance of 100mm should be left between the Patio 500 and any wooden or other combustible material.

## Tools Required



## Instructions - Log Store and Firechest (Step 1)



Create a suitable base. We recommend 100mm thick reinforced concrete. Bed the two C sections using the supplied jointing adhesive. Check each stage is level.



Mix jointing adhesive as per instructions on the bag. Apply 15-20mm beads using the supplied application bag as shown in the picture above.



Apply jointing adhesive around the top of the C section and then press the base plate down into position. Check that it is level.



Apply joint adhesive and place C section into position, repeat process for second C section.

## Instructions - Gather Unit (Step 2)



Apply jointing adhesive to the top layer and then press the front and rear sections of the gather unit into place.



Apply jointing adhesive to the joints on the sides of the front and rear panels of the gather unit.



Press the side panels of the gather unit into place.



The fireplace with the gather unit should resemble the image above.



Apply a layer of jointing adhesive around the top of the first block and then press the second block into place. Ensure the top is level and clean off any excess adhesive.



Apply a layer of jointing adhesive on the 2 x chimney blocks. Check all is level and wipe off excess adhesive.



# Instructions - Rendering (Step 3)



## External Render

To be mixed, adhered to the surface and smoothed over by a competent person. As this is heat resistant external render, it requires more care and pressure to spread than traditional render, which is much smoother.

Render is designed for one coat, if you require more coats you will need to purchase more render.



Burn off the fibres on external surface before rendering.



Mix the render as per the instructions.



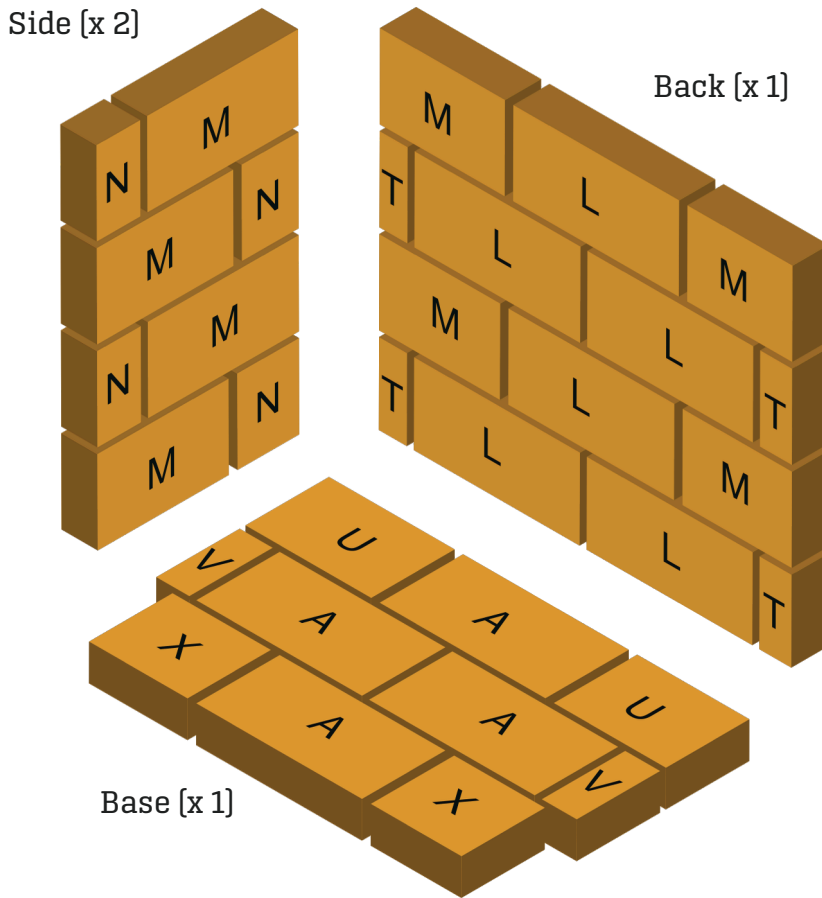
Render the surface areas.



Ensure the edges are smooth and wait to dry.



# Ossa Firebricks Guide



| Brick | L   | W   | D  |
|-------|-----|-----|----|
| A     | 230 | 114 | 50 |
| L     | 230 | 114 | 25 |
| M     | 156 | 114 | 25 |
| N     | 78  | 114 | 25 |

| Brick | L   | W   | D  |
|-------|-----|-----|----|
| T     | 35  | 114 | 25 |
| U     | 154 | 114 | 50 |
| V     | 35  | 114 | 50 |
| X     | 124 | 114 | 50 |

**Note for all models**

8mm gap between bricks.

Bedded on 1-3mm thick firebrick mortar.

Firebricks to be glued on and pointed with the Calderys firebrick mortar as per enclosed instructions.



Front bracket x 4

Back bracket x 4



Prior to mortaring the bricks, remember to place the 8 x brackets (2 front and 2 back brackets on each side) supported on the firebricks, before the next row of firebricks are added. These are supports for the grill.

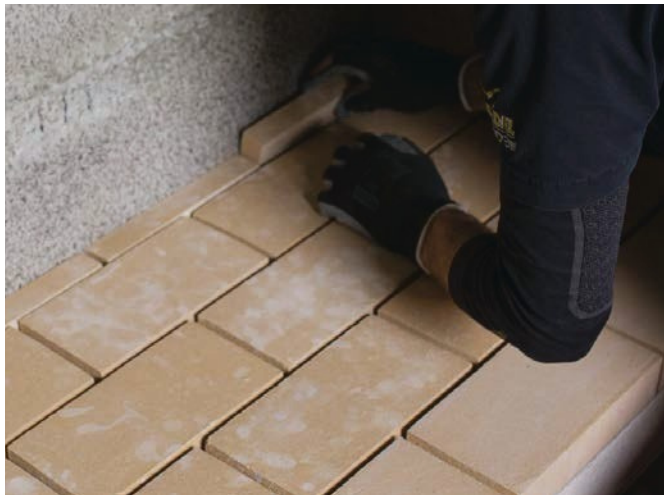
## Instructions - Firebricks and Grill Supports (Step 4)



Firebrick Mortar Bag - Used for gluing on firebricks and pointing in. Mix as per instructions on the bag.



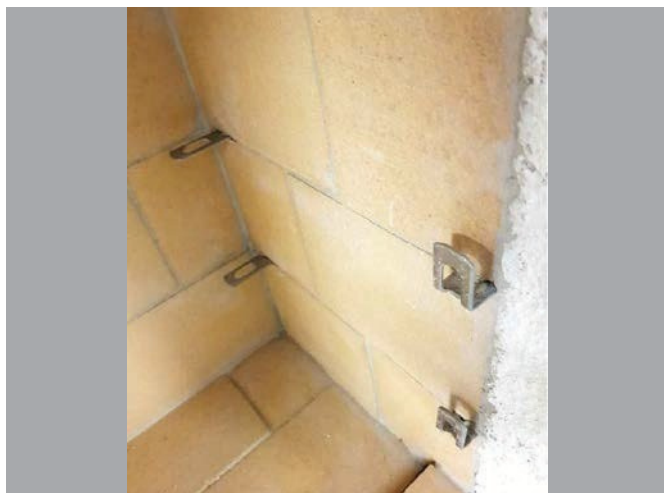
Bed the firebricks on to a 3mm layer of firebrick mortar. Use the tables on the previous page as a guide.



Complete the bottom layer of firebricks, then fasten the rear firebricks in place using the firebrick mortar. Use a tile spacer to keep an 8mm gap.



Once the bottom and rear firebricks are in place, fasten the side bricks in position using the firebrick mortar. Use a tile spacer to keep an 8mm gap. During the first and second level, you must slot in the grill supports as shown in the next step.



Inset grill support front and back brackets prior to fitting the firebricks on the side walls. These can be supported on the firebrick layer as shown.



Use the mortar mix to point up the joints between the firebricks once they are all in position. Clean off excess mortar.



## Instructions - Log Retainer (Step 5)



Drill 2 x 12mm diameter holes in the front row of the firebricks. Push log retainer holders in place.



Then push fit the log retainer bars into the slots.

## Optional Extras



Additional Chimney Block for Patio 500 [OLOSSCB].



Optional Top Cap [OLOSSTC].



Side Log Store [OLOSSLS].



Rain Cap [OLOSSRC].



## Optional Extras

If more than 1 additional log store is purchased, we recommend ordering 1 additional bag of jointing adhesive and 1 of render.



Jointing Adhesive 5kg [OLJA5].



External Render 20kg [OLER20].

## Instructions - Rain Cap (if purchased)



Rain Cap if purchased.



Bend the steel prongs out so the Rain Cap is a tight push fit into the concrete Top Cap.

## Instructions - Extra Chimney Blocks and Top Cap



If extra Chimney Blocks are purchased, simply repeat the steps shown on p.4, applying a layer of jointing adhesive between each block and pressing the next block firmly into place. Ensure the top is level and clean off any excess adhesive.



If the Top Cap is purchased, then apply a layer of jointing adhesive to the top of the final block and then press the Top Cap into place ensuring that it is level and wiping off any excess adhesive.

# Instructions - Additional Log Store



The additional Log Stores can be placed to either side or on both sides of the fireplace to suit your outdoor area plans.



Place the C shaped section onto the prepared surface alongside the main fireplace and apply jointing adhesive around the top edge of the section.



Place the next C shaped section on top of the first one.



Apply a layer of jointing adhesive around the top edge of the C section.



Carefully lower the top slab into position and ensure the surface is level.



The completed Log Store can now be rendered as part of the overall external rendering procedure. Follow the procedures shown on p.5 with regards to preparation and then rendering of the Log Store.



## After completion

Once build and external rendering is complete, please do not use for at least 72 hours after completion.

On first use, always light a small fire first and increase the size of the fire once the firechest has fully dried out. Only use dried and seasoned wood for the fire. Do not burn plastic or waste products.

## Guarantee

### INTRODUCTION

We are confident in our products and so offer you (the owner) a generous guarantee in relation to the Patio 500 Fireplace.

Provided that you comply in full with your responsibilities (below) and subject to the Small Print (below), we guarantee to you that the fireplace will be free from defects on delivery to you via pallet.

Any blocks or firebricks which are cracked or damaged at the time of delivery will be replaced free of charge. Damage must be reported within 14 days of delivery.

This guarantee does not cover any major impact to the fireplace (such as wear and tear, wind damage) once the item has been constructed and rendered. Due to expansion and contraction, small hairline cracks may appear in time and are considered normal and non-structural.

As the fireplace is an outdoor product, standard wear and tear will occur and any structural damage would have to be investigated. In the unlikely event that the fireplace becomes defective during the guarantee period, we will provide replacement component parts and render material free of charge.

### YOUR RESPONSIBILITIES

To benefit from our guarantee, this product will be registered to the address where we delivered it. Please inform us if the fireplace was installed elsewhere.

### HOW TO CLAIM UNDER YOUR GUARANTEE

To claim under your guarantee, please email us at [sales@litdesigns.co.nz](mailto:sales@litdesigns.co.nz). You will be asked to provide proof that you have complied in full with the terms of usage of the fireplace and that only dried and seasoned firewood has been used as a fuel.

## If you are an installer / builder

If you are a regular builder of our LIT DESIGNS, then please get in touch with us. We are looking for competent builders throughout the Australia to promote as "recommended builders" in certain areas.

Builders are able to benefit from joining our Installer Loyalty Scheme with points awarded for installations, which can then be redeemed for vouchers. Please email [sales@litdesigns.co.nz](mailto:sales@litdesigns.co.nz) for details.



021 08207762

[litdesigns.co.nz](http://litdesigns.co.nz)

[sales@litdesigns.co.nz](mailto:sales@litdesigns.co.nz)

Follow us on social media



[litdesignsnz](https://www.instagram.com/litdesignsnz)